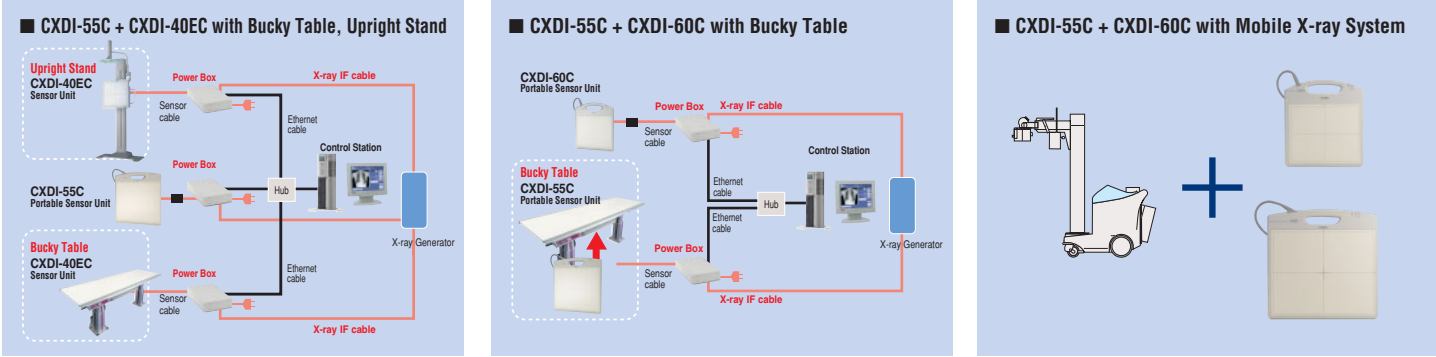


System Configuration Examples



For exact system configuration details, please contact your local authorized Canon representative.

CXDI-55C Specifications

| | |
|---------------------------|-----------------------------------------------------------------------------------------------------|
| Purpose | General radiography |
| Method | Flat panel detector: scintillator & amorphous silicon (a-Si) |
| Sensor | LANMIT (Large Area New-MIS sensor and TFT) |
| Scintillator | CsI (CsI: TI) |
| Pixel pitch | 160 x 160 microns |
| Pixels | 2,208 x 2,688 pixels (approx. 5.9 million pixels) |
| Image size | Automatic sizing up to 14 x 17 in. (35 x 43 cm) |
| A/D | 14-bit |
| Grayscale | 4,096 grayscale (12-bit) |
| Preview image access time | Approx. 3 - 5 seconds after X-ray exposure |
| DICOM | DICOM 3.0 compatible, Print Management Service Class (SCU), Storage Service Class (SCU), and others |
| Voltage | AC 100 - 240 V 50/60 Hz |
| Power consumption | 170 VA maximum |
| Operating environment | Sensor unit: 41 - 95°F (5 - 35°C), 30 - 50% RH (non-condensing) |
| Dimensions | Sensor unit (W x L x T): 18.9 x 18.9 x 0.6 in. (480 x 481 x 15 mm) |
| Weight | Sensor unit w/o cable: 7.5 lbs. (3.4 kg) |
| Standard components | Sensor unit, power box, remote switch, x-ray interface cable |

| | |
|------------------|--------------------------------------------|
| ■ User Options | |
| Grid | Please contact an authorized Canon dealer. |
| Software options | Please contact an authorized Canon dealer. |

Specifications are subject to change without notice.
Names of companies or products appearing in this document are trademarks and/or registered trademarks of their respective owners.



CANON INC.
MEDICAL EQUIPMENT GROUP
30-2, Shimomaruko 3-chome, Ohta-ku, Tokyo 146-8501, Japan
Telephone: +81-3-3757-8497 Fax: +81-3-5482-3960

CANON U.S.A., Inc. Medical Systems Division
15955 Alton Parkway, Irvine, CA 92618-3731, U.S.A.
Telephone: (1) 949-753-4160, toll-free within U.S.A.: 1-800-970-7227
Fax: (1) 949-753-4184
<http://www.usa.canon.com/DR>

CANON EUROPA N.V. Medical Systems Division
Bovenkerkerweg 59-61, 1185 XB Amstelveen, The Netherlands
Telephone: +31-(0) 20-545-8926 Fax: +31-(0) 20-545-8220
<http://www.canon-europa.com/Medical>

CANON SINGAPORE PTE. LTD. Medical Equipment Dept.
1 HarbourFront Avenue, #04-01 Keppel Bay Tower, Singapore 098632
Telephone: +65-6796-3549 Fax: +65-6271-4226
<http://www.canon-asia.com>

CANON (CHINA) CO, LTD. Medical System Division
15F Jinbao Building No.89 Jinbao Street, Dongcheng District, Beijing 100005, China
Telephone: (86) 10-8513-9999 Fax: (86) 10-8513-9914
<http://www.canon.com.cn>

CANON AUSTRALIA PTY. LTD. Optical Division
1 Thomas Holt Drive, North Ryde, Sydney, NSW 2113, Australia
Telephone: +61-2-9805-2000 Fax: +61-2-9805-2444
<http://www.canon.com.au/default.aspx>



Digital Radiography System
CXDI-55C
Premium Portable Flat Panel Detector

DR WHERE YOU NEED IT MOST
Thin, Lightweight DR Technology with High Sensitivity

Be gentle.

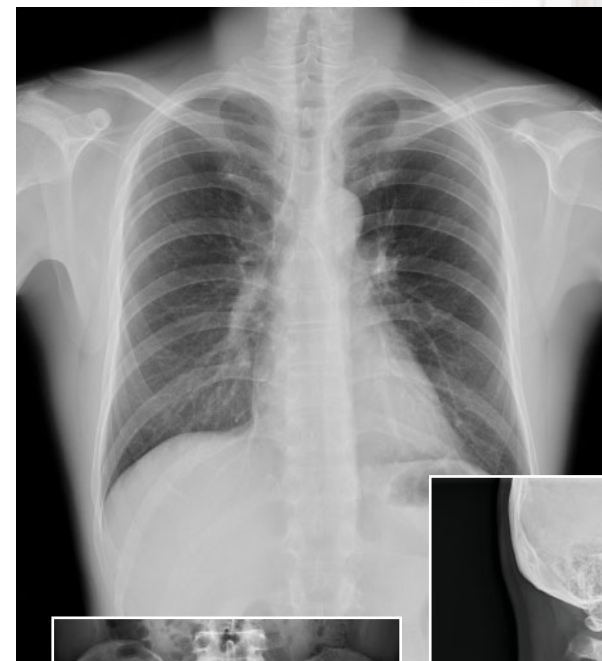
High-Quality Digital Radiography from a Sensitive, Thin and Lightweight Flat Panel Detector

Canon has once again proven itself the leader in digital radiography. The lightweight CXDI-55C offers convenient DR imaging in a compact device with large area detection and a detachable cable for simple portability. This model also has a highly sensitive scintillator for obtaining high-quality diagnostic images with minimal X-ray exposure.

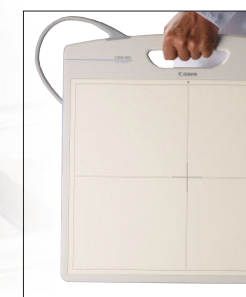
CXDI-55C

High-Sensitivity DR Technology

The Amorphous Silicon Flat Panel Detector of the CXDI-55C has a scintillator made of Cesium Iodide (CsI). The CsI crystals provide optimal light-channeling properties for effective X-ray absorption and high signal-to-noise performance. The advanced LANMIT technology delivers high-quality diagnostic images with minimal X-ray exposure to patients, an ideal feature for pediatric and orthopedic purposes.



● Thin and Lightweight



Impressively thin – the same thickness of standard film cassettes – this light and simple-to-use sensor can be utilized at a moment's notice in trauma centers and ICUs. At only 7.5 lbs. (3.4 kg), the CXDI-55C is so easy to grip and handle that both the patient and X-ray technician can comfortably hold the unit in place during image capture.



Only 0.6 in. (15 mm) thick

● Sizeable Detection Area

With a large 14 x 17 in. (35 x 43 cm) imaging area, the generous size of CXDI-55C accommodates a wide variety of radiographic applications, such as skull, spine, chest, abdomen, and extremity examinations.

● Superior Diagnostic Imaging

The CXDI-55C uses Canon's Amorphous Silicon Flat Panel Detector. Known as LANMIT, it produces high-resolution, high-contrast diagnostic images. Multi-objective frequency processing by CXDI-55C can be optimally calibrated to view the images on LCD monitors.

● Results in Seconds

A preview image is produced immediately after X-ray exposure, allowing for quick image confirmation, timely network distribution, and speedy diagnoses. If another image is required, the sensor is ready for the next X-ray exposure in moments thanks to its rapid refresh cycle.

● Extensive Network Capabilities

DICOM 3.0 compatibility enables seamless data transfer to any DICOM devices, PACS, or RIS for efficient data management, printing, archiving, and remote image viewing. Such workflow efficiency means less wait time for patients, as well as higher patient throughput and less of a burden on staff.

Cable Detachment for Mobile Convenience

The CXDI-55C offers the benefits of true portability with a detachable sensor cable: time-effective transport and simple installation. Easily attach different types of CXDI sensors: 55C, 55G, 60C, and 60G.

